

## **Sycor.SharedProjects**

*The SAP solution for collaborative product development*

As a medium-sized business, you can use *Sycor.SharedProjects* to satisfy all your collaborative product development needs. You will benefit from reduced development times and costs thanks to an integrated collaboration platform that supports your company-wide development process.



If you want to remain competitive in the future, minimizing development times and costs is essential. At the same time, you often need to integrate and manage disparate structures in collaboration with internal and external development partners. If you want to build a secure, transparent and manageable development process, your key challenge is to manage the entire process effectively both inside and outside the company. As a browser-based collaborative platform, *Sycor.SharedProjects* provides comprehensive support in planning, controlling and monitoring collaborative product development processes.

### **Your challenges:**

- Plan, manage and monitor cross-company development projects
- Collaborate in distributed project teams with clearly defined competencies and responsibilities
- Map and manage complex document and product data structures

The cProjects and cFolders components combine project management functions with features for publishing and managing product design data and documents so that partners in the process have all the information they need when they need it. While providing comprehensive communication functions that allow interdisciplinary teams to interact, cooperate and collaborate across sites and departments, *Sycor.SharedProjects* is also a valuable tool for project management teams that plan, manage and monitor distributed projects on a daily basis.

An integrated resource management function ensures optimized, expertise-oriented resource planning and assignment of responsibilities and tasks. Thanks to advanced quality management functionality, you can continuously monitor and satisfy customer-specific requirements throughout the entire product development process. The cFolders component allows for administration and collective editing of product design data (even directly from CAD applications) and features a special access and authorization concept for safeguarding sensitive data. >>>

### **Your advantages:**

- Cross-company project management with integrated resource planning, scheduling and cost accounting
- Integration of processes and applications outside your company and location
- Flexible access to your project data, regardless of time or location

### **Your contact:**



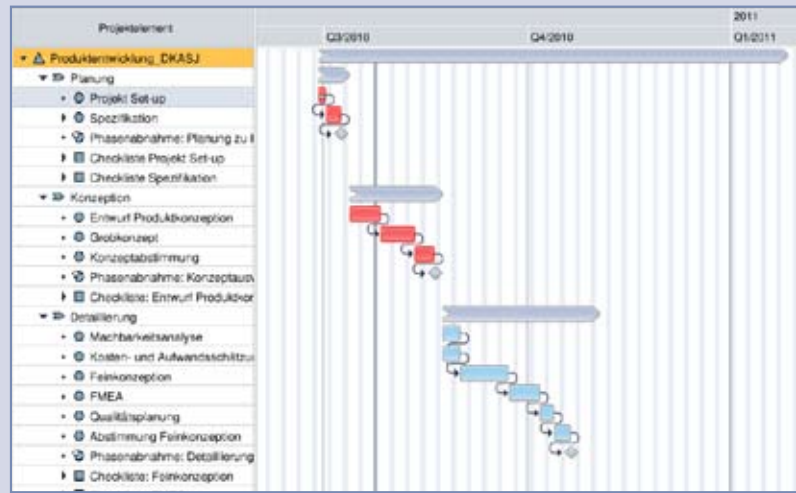
**John Bertolino**  
Sales & Marketing Director

john.bertolino@sycoramericas.com  
+1 412 788 9494



The workflow management component streamlines processes and promptly notifies managers of changes and new tasks. Functions for managing approvals, statuses and revisions ensure consistency of product data and optimize process control.

You can use different integration scenarios to modify and expand the functional scope of company-specific requirements. For example, by integrating the document management system in SAP ERPS you can store and manage documents outside *Sycor.SharedProjects* to ensure uniform use of product and project-related data throughout the company. Through integration of accounting functions, you can monitor project costs and receipts during the development process. You can also import data from other project management systems into *Sycor.SharedProjects*.



**Features at a glance:**

- Project planning and management for resources, tasks, schedules and costs
- Management of multiple projects
- Project versions with simulations and snapshots
- Project monitoring through status reports and customized analyses
- User management with object-specific authorizations for managing access rights
- Standardized processes through use of templates
- Management and collective editing of product data and structures
- Integrated visualization and redlining for displaying 2D and 3D objects
- Notification and status management for monitoring processes via email and instant messaging
- Extensive options for integration with SAP, e.g., CRM, HR, BW, DMS, CO, SRM
- Integration of external applications such as the ECL Viewer or the WebEx conference tool
- Import/export of data and product structures, e.g., from or to MS Project, XML files